

## Anti-NPR1 hlgG1 Antibody(XX-16)

### Product information

GM-87696AB-10	10 µg
GM-87696AB-100	100 µg
GM-87696AB-1000	1 mg

### Antibody Information

Species Reactivity	Human;
Clone	XX-16
Source/Isotype	Monoclonal human IgG1, κ
Application	Flow cytometry
Specificity	Detects NPR1
Gene	NPR1
Other Names	ANPRA, ANPa, GUC2A, GUCY2A, NPRA
Gene ID	4881(human);
Background	Guanylyl cyclases, catalyzing the production of cGMP from GTP, are classified as soluble and membrane forms. The membrane guanylyl cyclases, often termed guanylyl cyclases A through F, form a family of cell-surface receptors with a similar topographic structure: an extracellular ligand-binding domain, a single membrane-spanning domain, and an intracellular region that contains a protein kinase-like domain and a cyclase catalytic domain. GC-A and GC-B function as receptors for natriuretic peptides; they are also referred to as atrial natriuretic peptide receptor A (NPR1) and type B (NPR2).which encodes a protein with only the ligand-binding transmembrane and 37-amino acid cytoplasmic domains. NPR1 is a membrane-bound guanylate cyclase that serves as the receptor for both atrial and brain natriuretic peptides (ANP) and BNP, respectively).
Storage	Store at 2-8°C short term (1-2 weeks).Store at ≤ -20°C long term. Avoid repeated freeze-thaw.
Formulation	Phosphate-buffered solution, pH 7.2.
Endotoxin	< 1 EU/mg, determined by LAL gel clotting assay

Version:3.2 Revision Date:03/25/2024

## Data Examples

Flow cytometry

H\_NPR1 HEK-293 Cell Line(Catalog # GM-C34844) was stained with Anti-NPR1 hIgG1 Antibody(XX-16) (Catalog # GM-87696AB) or isotype control antibody, followed by anti-Human IgG APC-conjugated Secondary Antibody.

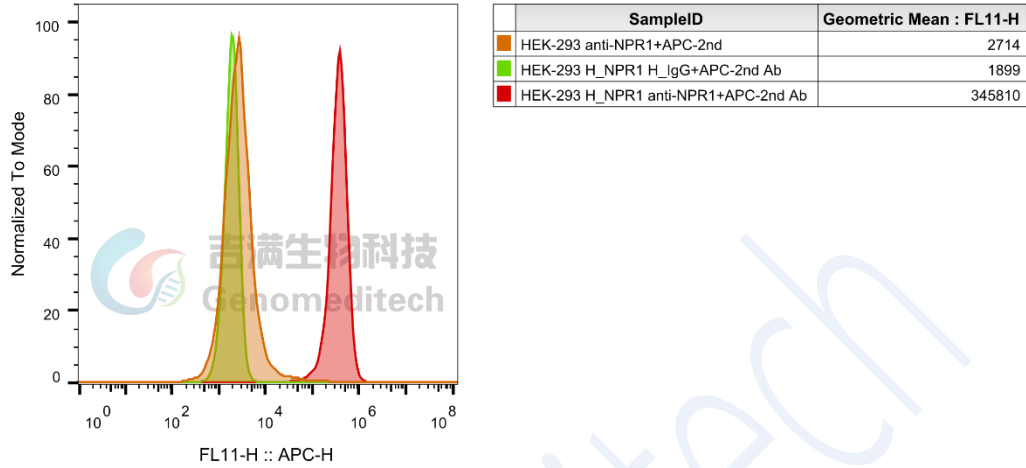


Fig. FACS